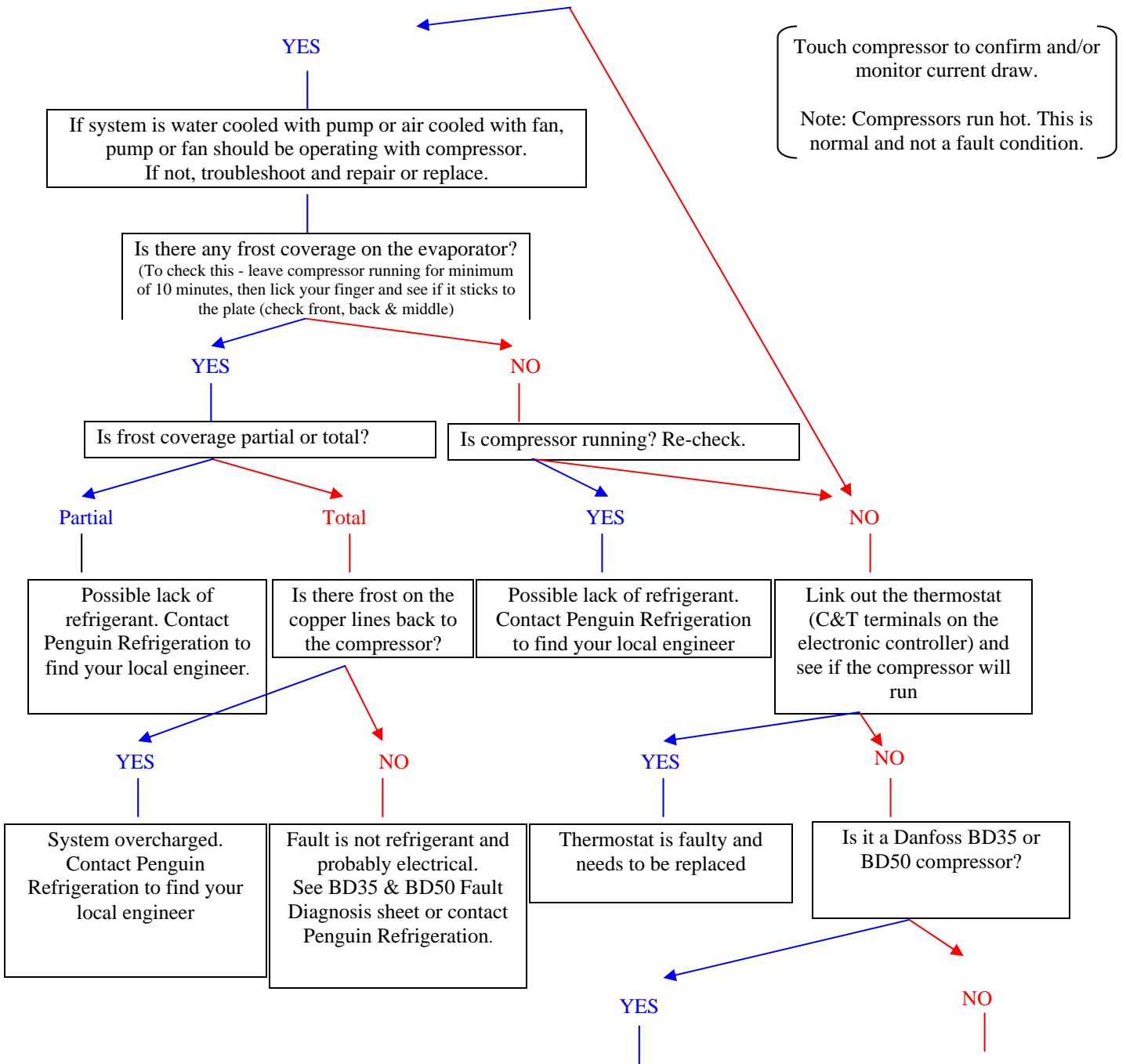




## IS THE COMPRESSOR RUNNING?



Touch compressor to confirm and/or monitor current draw.  
 Note: Compressors run hot. This is normal and not a fault condition.

Danfoss BD35 & 50 Diagnosis	
No. of flashes per 4 seconds	Corrective action
One	- Low voltage: check power supply
Two	- Faulty fan: unplug and/or replace fan
Three*	- Compressor non-start: Turn system off and re-start after 5 minutes
Four	- Low compressor RPM
Five	- Electronics temperature overload: re-sets on cool down
*This is a common occurrence if power is interrupted and restored too quickly.	

Danfoss BD35 or BD50 compressor, have a built in diagnostic that you can check using LED circuit  
 See table left and BD35 & BD50 Fault Diagnosis information sheet

Check the voltage to the compressor. Low voltage due to a poor connection is the most common cause of a fridge compressor failing to start - Please refer to our 'Power Supply Testing' information sheet.  
 If low voltage has been eliminated please return controller to Penguin Refrigeration for test or contact us for further assistance